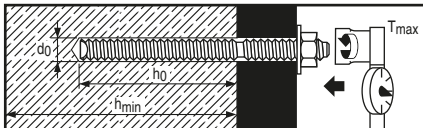


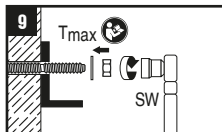
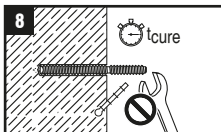
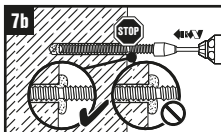
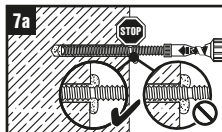
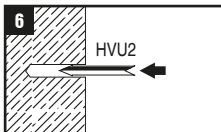
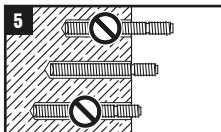
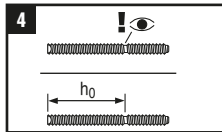
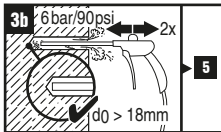
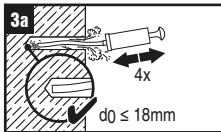
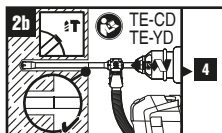
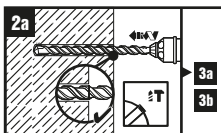
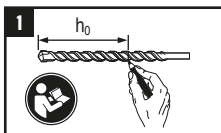
# HVU2 M16x125



[°C]	[°F]	$t_{\text{cure}}$
-10...-6	14...22	5 h
-5...1	23...31	3 h
0...9	32...49	20 min
10...19	50...67	10 min
20...40	68...104	5 min

2173871 03.2017

HVU2	Anchor Size	d <sub>0</sub> (mm)	h <sub>0</sub> (exact) (mm)	h <sub>min</sub> (mm)	T <sub>max</sub> (Nm)	HIT-RB	Setting machine		
							TE(-A)	SF(H)	(RPM)
M16x125	M16	18	125	160	80	18	1...40	6, 8, 10, 22	450...1300



**CE**

17  
Hilti AG  
FL-9494 Schaan  
Hilti Werke  
1343-CPR-M 500-30/07.14  
ETA-16/0515  
Notified body 1343  
ETAG 001-1, -5 Option 1  
www.hilti.com

Info | Shop



or.hilti.com/2164566

www.hilti.com  
Hilti = registered trademark  
of Hilti Corporation,  
Schaan, Liechtenstein

Made in Germany