



FIRESTOP CAST-IN DEVICE CFS-CID

Technical Manual

European Technical Assessment
ETA-20/1233

Issue 12/2020



FIRESTOP CAST-IN DEVICE CFS-CID



Applications

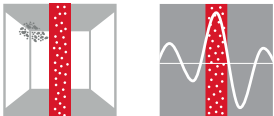
- Concrete slabs built with traditional formwork
- New building construction
- Sealing combustible and non-combustible pipe penetrations
- Tested with pipe elbows, which allows reduced service zone

Advantages

- One-step firestop solution for a variety of pipe materials and diameters – no additional backfilling required
- Modular connection allows close placement of multiple penetrations
- Quicker and simpler installation
- Integrated moisture and smoke seal
- Lid strong enough to carry foot traffic and light access equipment

Technical Data

Base materials	Concrete
Approvals	EN 13501-2: 2007+A1:2009, EN 1366-3:2009
Height	250 mm
Application temperature range	-5 – 50 °C
Temperature resistance range	-20 – 100 °C
Color	Red
Re-penetration	Easy
Reaction to fire class (EN 13501-1)	E



Ordering description	Pipe diameter – range	Sales pack quantity	Item number
CFS-CID 50	40 – 63 mm	1 pc	2124523
CFS-CID 75	50 – 75 mm	1 pc	2124524
CFS-CID 110	80 – 110 mm	1 pc	2124525
CFS-CID 160	125 – 160 mm	1 pc	2124526

MANIFOLD ADAPTER CFS-CID

Applications

- Creation of a 70 mm deep recess in a slab
- For use in conjunction with the appropriate cast-in device
- Creates an underside void for the installation of an elbow-connector system

Advantages

- Allows a manifold to be accommodated and thus simplifies plumbing installations
- Accommodates manifold connections and shower traps for walk-in showers and wet rooms
- Reduces final ceiling depth by creating a 70 mm recess in the slab
- Pipes can be installed closer to the ceiling, thus reducing spacing

Technical Data

Base materials	Concrete
Height	77 mm
Application temperature range	-5 – 50 °C
Color	Red



Ordering description

Sales pack quantity

Item number

CFS-CID Manifold Adapter

1 pc

2124527

HEIGHT EXTENSIONS CFS-CID

Applications

- For use with CFS-CID cast-in devices

Advantages

- “Screw on” feature promotes a secure connection to the device and cover cap
- Adds 150 mm of height to pre-formed firestop devices

Technical Data

Base materials	Concrete
Height	150 mm
Application temperature range	-5 – 50 °C
Color	Red



Ordering description

Pipe diameter - range

Sales pack quantity

Item number

Extension tube 6" CP 680-P 2"

40 – 63 mm

1 pc

244252

Extension tube 6" CP 680-P 3"

50 – 75 mm

1 pc

244253

Extension tube 6" CP 680-P 4"

90 – 110 mm

1 pc

244254

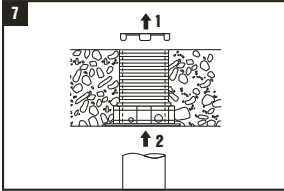
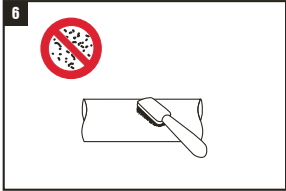
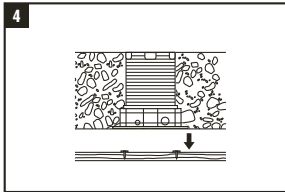
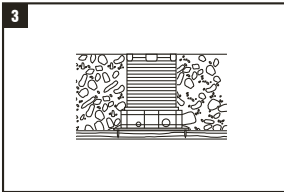
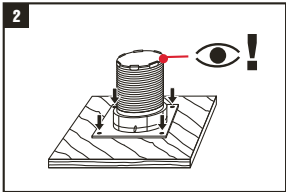
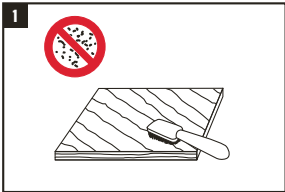
Extension tube 6" CP 680-P 6"

125 – 160 mm

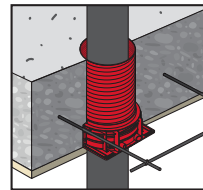
1 pc

244255

GENERAL INSTRUCTIONS FOR USE



GENERAL INFORMATION



Partition	Rigid Floor
Base material thickness (t _E)	≥ 150 mm
Distance between devices	Zero for all pipe types
Fixing to formwork	Wood nails
Gap filling	No backfilling required
Penetrant	Combustible and non-combustible Pipes

MAIN APPROVED APPLICATIONS

Application	Pipe material	Pipe Ø mm	Classification in rigid floor
Waste water, Roof drainage 	PE/PE-HD EN 1519-1, EN 12666-1 (covers EN 12201-2, EN 1519-1, EN 12666-1, EN 1455-1 (ABS), EN 1565-1 (SAN+PVC) EN ISO 15494 (Industrial), DIN 8074	40 – 160	EI 180 U/U
	PVC-U EN 1329-1 or EN 1453-1 or EN 1452-1 (covers EN 1329-1, EN 1453-1, EN 1452-1, EN 1566-1), EN ISO 15493 (Industrial, equivalent EN 1452)	63 – 160 50 – 160	EI 180 U/U EI 120 U/U
	PE S2 Geberit db20 (Non-regulated)	56 – 160	EI 180 U/U
	PP (EN 1451-1, DIN 4102)*	40 – 160	EI 180 U/U
Drinking water 	PP-R DIN 8077/8078 (e.g. Aquatherm)	32 – 160	EI 180 U/C
	PE-Xa Rehau Rautitan Flex	32 – 63	EI 180 U/U
Heating 	AL-composite pipes with elastomeric insulation (e.g. Geberit Mepla, etc)	40	EI 180 U/C
	Copper, steel, stainless steel and cast iron with elastomeric, glass or mineral wool insulation	18 – 89	EI 180 C/U

* Coes "Blue Power", Coes "PhoNoFire", "Geberit Silent PP", Marley Silent, Ostendorf "Skolan-dB", Pipelife "Master 3", POLOPLAST "Polokal NG", POLOPLAST "Polokal 3S", "POLOPLAST Polokal XS", Rehau "Raupiano Plus", Wavin "AS", KeKelit "Phonex AS", Wavin "SiTech", Valsire "Triplus", Valsire "Silere"

Excerpt of ETA document. Check the exact field of application for each pipe (type, diameter and pipe wall thickness) in the ETA-20/1233 document.

OTHER APPROVED APPLICATIONS

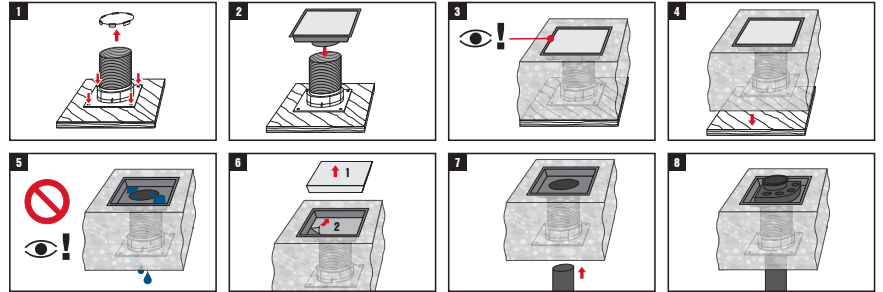
CFS-CID Manifold Adapter

Dimensions:
280 × 280 × 75 mm

To use with Firestop Cast-in Device CFS-CID 110 mm

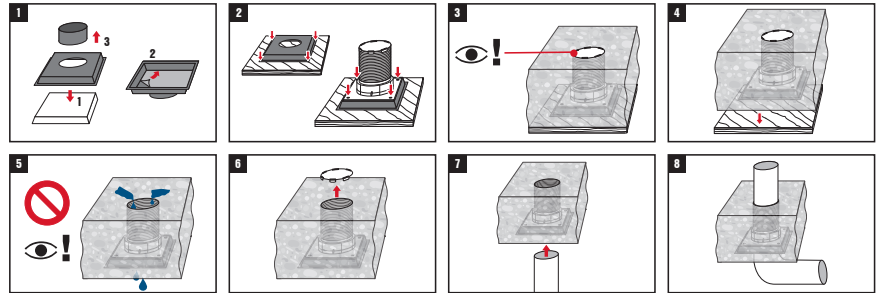


Recess for pipe junctions



Recess for pipe elbow couplers

EI 180 U/U for PVC and HD-PE pipes Ø = 110 mm



Firestop Cast-in Extensions

Adds an extra 150 mm to the Cast-in Device with a strong and stable connection.

Coupler and extensions available for all CFS-CID diameters.



Firestop Cast-in CFS-CID without pipe penetrations

All sizes tested and approved only with the lid on top.



See ETA-20/1233 for details of approved pipes

Zero distance between Cast-in Devices

It is possible to assemble Firestop Cast-in Devices with zero separation between them.



See ETA-20/1233 for details of approved pipes

CHARACTERISTICS OF CFS-CID

Characteristics	Assessment of characteristics	Norm, standard, test
Health and the environment Emission test	CFS-CID was tested for VOC emissions according to ISO 16000 and was deemed compliant to the AgBB regulations (version 2010). The concentration of SVOC after 3 and 28 days was $< 5 \mu\text{g}/\text{m}^3$. The concentration of the total emission of VOC after 3 and 28 days was $\leq 25 \mu\text{g}/\text{m}^3$	Material safety data sheet
Protection against noise Airborne sound insulation	Hilti CFS-CID 50 $D_{n,w} = 55 \text{ dB}$ Hilti CFS-CID 75 $D_{n,w} = 51 \text{ dB}$ Hilti CFS-CID 110 $D_{n,w} = 48 \text{ dB}$ Hilti CFS-CID 160 $D_{n,w} = 46 \text{ dB}$	EN ISO 10140-1 EN ISO 10140-2 EN ISO717-1
Durability and serviceability	Category Y2 (suitable for penetration seals for use in dry indoor conditions at temperature below $0 \text{ }^\circ\text{C}$ with with no exposure to rain nor UV	EAD 350454-00-1104
Reaction to fire	Class E	EN 13501-1



Hilti Corporation
9494 Schaan, Liechtenstein
P +423-234 2965

www.facebook.com/hiltigroup
www.hilti.group